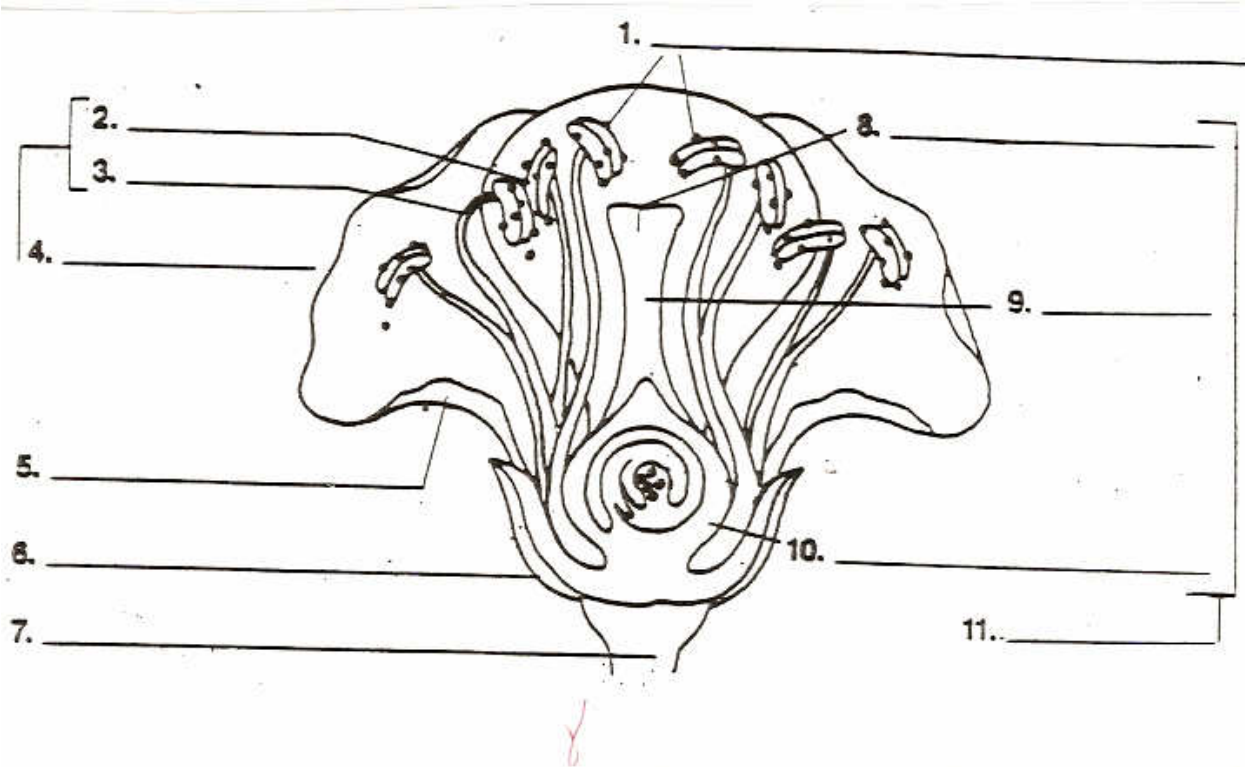


Parts of a Flower



Structure	Function
1	
2	
3	
4	
5	
6	
7	
8	
9	
10	
11	
12	

Structure (Part)	Function (Job)
1. Pollen Grains	Contain sperm (inside=lots of sperm & liquid);
2. Anther	Makes up the pollen
3. Filament	Holds up the anther
4. Stamen	The entire <u>male</u> part of the plant (blue)
5. Petal	Attracts animals for pollination
6. Sepal	Protects flower bud (green)
7. Receptacle	Where the flower attaches to the stem (color green)
8. Stigma	Where the pollen lands, sticky surface
9. Style	Middle of the pistil, holds stigma
10. Ovary	Where the ovules (eggs) are made
11. Pistil	The entire female part of the flower (red)
12. Ovule	Egg